

HV pistols and warning lamps

HV test pistols | safety equipment | test probes



Warning lamps and result lamps

Warning lamps serve to indicate, whether the test object is connected to voltage or not.

Result lamps indicate the overall test result of the test process. Customer-specific special displays, which can be controlled by the tester, also belong to our extent of delivery.

Resistance test probe

With the probes for the resistance test, the resistance to be measured is detected in 4-wire configuration.



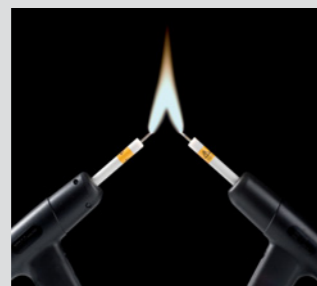
Resistance test probe in 4-wire configuration



Test probes for the armature test



Warning or result lamp



High Voltage

For a secure manual high-voltage test, safety test pistols are required. There are various designs depending on the level of the test voltage. For convenient handling, we offer test pistols with integrated start function. The high-voltage test does not start before activating the switch.



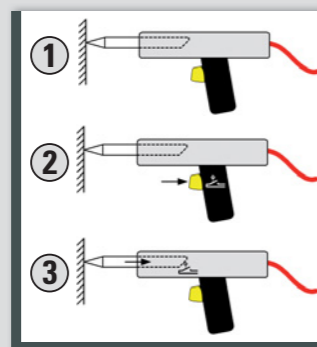
High-voltage test probe up to 1500V safety-current limited



High-voltage connection lead



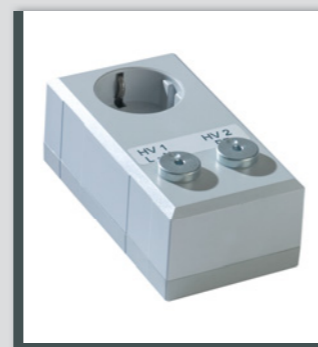
Test pistol up to 8KV AC/10KV DC



High-voltage test pistol without start function ①, with start function ②, with start via mechanical pressure switch ③



Test pistol up to 12KV AC/15KV DC



Adapter between test object and test pistol

PE test probes

PE test probes serve for contacting the PE connections manually. Test probes with integrated start function and colored LED can be used not only for starting the PE test, but also for starting the complete test process, for confirming test steps for visual examination and for confirming other messages.



Large PE test probe with integrated start function



Test probe with switch-over for limit values and test methods

Safety

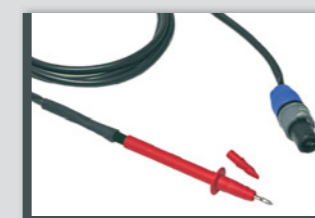
For safety reasons, the high-voltage test without protection cover and without safety test pistols requires a two-hand start. For operating test stations, it is necessary to observe the respective standards.



Two-hand start



Small PE test probe



Test probe with start function



Safety chain with warning sign



Barrier posts with warning lamps and emergency stop

Refer to:

Mains-connection adapters	70
Contacting devices for leads	72
Special contacting devices	74
Test covers	76
Rolling tables	78
Test methods	94