

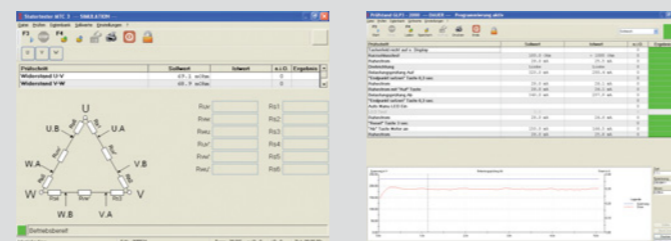
Test software for Windows® testers



Highlights

- intuitive operation
- clearly structured test sequence/logic GUI
- testing without special knowledge
- integrated information for users and operators
- input of test parameters without extra editor
- clearly structured input of test parameters
- based on Windows XP® or Windows 7®
- ideal for network operation
- high data security and long-term data storage
- connection to CAQ systems and/or ERP (Enterprise Resource Planning) systems
- extensive configuration options

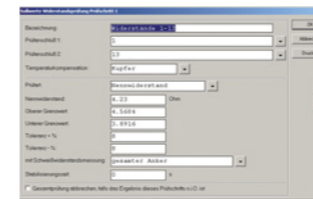
Our test software is operated under Windows®. The easy-to-operate user interface facilitates controlling the test process, generating test programs, printing protocols, evaluating statistics and collecting data for the result documentation. Every Windows®-based tester we make offers the full functionality of our software.



The test process

The test process is indicated clearly structured. The status line at the bottom of the window instantly shows information about tested go / no go statements and allows to evaluate the quality of the product already during the test process.

In order to enable fast and fault-free testing, we have added pictures to all test steps with operator activities. Owing to the integrated operating instructions, the tester conforms to ISO9001.



Input

For editing test steps, it is not necessary to open a separate test-program editor. For editing individual test steps, it is sufficient to click on the test step in order to be able to change parameters and adapt the tests. An integrated user-profile management makes sure that only authorised personnel can edit the data.

Data

Test programs and test results can be stored in Access®-database format either locally on the tester or on a central server on the network.

A standard feature of our Windows®-based testing devices is the operation of any number of testers in a network. The individual testers store their results on a central database. Always using the

same test programs for your products, you are thus able to assure the quality of your products worldwide and access the test results, no matter in which part of the world the branches of your company are located.

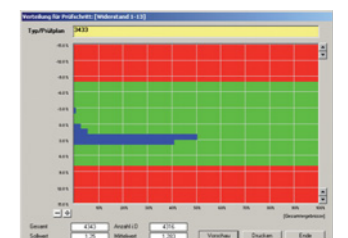
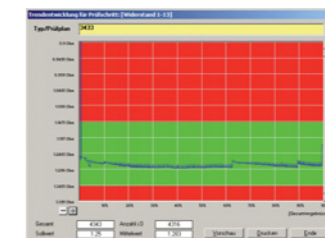
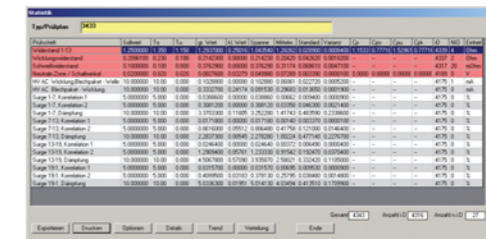
Through an easy connection to ERP systems, PPS systems or CAQ systems, our Windows®-based testers can perfectly be integrated into your factory planning and your production control.



Labels and test protocols

Labels and test protocols are normally needed directly after the test. Comfortable print programs enable an optimum configuration. With the programs cablabel®, BarOne®, BarTender®, Codesoft® or Easylab®, labels can be designed beforehand. With the test software it is possible to add pre-defined, test-related information automatically. The labels can be printed via one or more thermal-transfer printers.

At a later point, it is possible to generate further print-outs or test protocols out of the database – either at the testers or within a network at a workstation. If desired, the print-outs or test protocols can be adapted to the customer's layout.



Database

Informative statistics can only be generated from a large basis of test results. For the design of our Windows®-based testing devices, we have, therefore, put great emphasis on a comfortable storage

of the test results over a long period of time. Freely configurable search filters allow every user to find the relevant data in the database quickly and easily. After that, you can either have an individual evaluation or a summary of the results over a certain period of time followed by a statistical evaluation. Trend indicators and Gaussian distributions give detailed information about the quality status of the production. Our testers can store your data on a daily, weekly or monthly basis. In addition, they allow to evaluate your data related to orders or lots.

The integrated export function allows the user to extract data from the database easily. This data can be entered into other databases or processed in Excel®. This enables you to create your own, separate evaluation.

The database can be based on Access® or SQL. In case of large amounts of data or the application in a network, we recommend using Microsoft® SQL.

Refer to:

GLP3	36
MTC2	48
MTC3 stator testers	50
Windows® networks	64
Windows® data exchange	66